



Enterprise Test Automation Made Simple

AquilaTest is a codeless test automation platform that is enabling Fortune 500 companies to reduce bottlenecks that are common in legacy tools: costly script creation and maintenance, specialised skills for specific testing types, and complex test scenarios across multiple apps.

Embrace the Automation Evolution



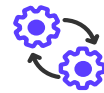
Manual Testing

Slow to execute, expensive to maintain, and prone to human error



Legacy Automation

Fast when executing, but bottlenecked by script maintenance



Automation 2.0

Codeless & AI-based; 90%+ test coverage while reducing cycle time

Increase Test Coverage



Decrease Test Cycle Times.

Parallel Execution

Parallel tests with multiple VM's running different OS & Browser combinations

Multiple Apps

A single test scenario can test workflows across multiple apps

Single Pane Test

Functional & API & DB & UI testing in a single test scenario & platform

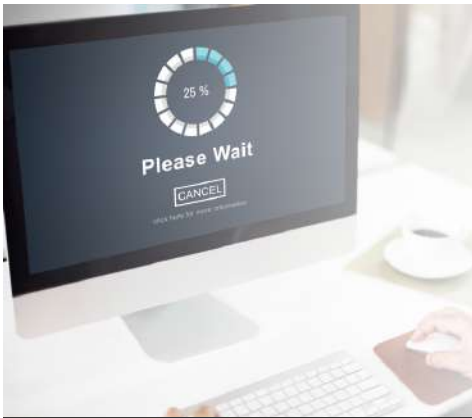
Test Data Creation

Auto-generate test inputs or input them from a spreadsheet

Codeless and Modular

Drag and drop workflows, reusable test cases, pre-selected default validations



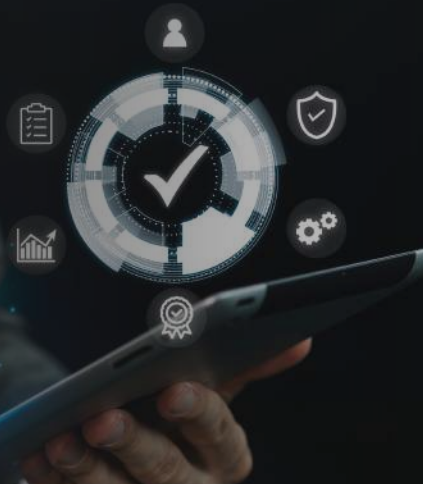


The Problem

We live in a world with rapid technological innovation and greater customer expectations. As a result, time to market for new products and features is a key differentiator. Yet, quicker launches and updates cannot come at the expense of lower quality and higher costs either.

The Solution

AquilaTest solves this conundrum by enabling engineering teams to move fast without breaking things. Our codeless automation platform reduces bottlenecks in the product development cycle by removing the need for costly script creation and maintenance, reducing the need for specialized skills across testing types, and streamlining complex test scenarios that have workflow and data dependencies between different applications.



The Advantage

AquilaTest has all the core features of leading automation tools: codeless automation, cloud-based support, and CI/CD integration. Yet it layers on advanced AI/ML models that accelerate end-to-end testing by utilizing both statistical analysis and predictive models to help determine what to test, when to test, and how to test.

01 What to Test

By highlighting components and workflows not covered in test cases

02 When to Test

By prioritizing component dependencies after software upgrades

03 How to Test

By optimizing test coverage and test sequencing based on priority

Enterprise-Grade Test Automation

Core Features: API & DB & UI & Data Migration testing, CI/CD Integration, Parallel Execution, Reusable Test Cases, Single Test Scenario Across Multiple Apps, Auto-Generated Test Data.

AquilaTest works with all web-based applications, including Salesforce, Oracle, and SAP, thereby enabling end-to-end test automation of business processes across multiple apps.